

OWLS academy trust



Hinckley Parks
Primary School

Parent & Guest Presentation

24th April 2017.

Agenda



Hinckley Parks
Primary School



- What is an Academy and MAT?
- The Process in brief.....
- The Story so far
- Why Change?
- Governance of an MAT
- Our Proposal



Hinckley Parks
Primary School

What is an Academy & MAT?



Hinckley Parks
Primary School



An Academy:

- Is a state funded independent school
- Operates within the requirements of national codes of practice for state schools
- Receives its funding directly from central government rather than through a local authority (LA)
- A MAT is a Multi Academy Trust – Schools working together is a formalised way.



The Story so far –

OWLS Academy Trust 4 years on.....

.....And What's the future

.....Academies are here to stay, but in a far greater format than we have seen.....

We need to move with the changes now and not be left behind.....



Hinckley Parks
Primary School

Why change, what are the advantages?

- Autonomy given to the School rather than the LA, thus giving the school a stronger focus on -
 - Continuing to further develop excellent educational standards in all schools
 - Freedom to funnel extra resources towards our children, and their educational needs
 - Greater level of curriculum freedom
 - Gives the school an ability to change the curriculum to fit the needs of our children
 - Sharing of expertise, services and resources
 - Academies will bring clearer understanding of shared resources from school to school
 - Ability to 'shop around' for best value services
 - Better Opportunities for staff professional development

Benefits

- Supply teachers – employ teachers
- Specialist teachers, Music, PE, SEN, EP etc....
- Bursar
- Business Manager, CFO, CEO, accounting officer.
- Financial approach – auditors.. Security.....
- Further development of excellent standards
- More Efficient Procurement
- Shared resources / facilities



Hinckley Parks
Primary School



Governance within MATs

- **Members** – are akin to shareholders of a company, they have ultimate control, with the ability to appoint some of the trustees and the right to amend the trust's articles of association.
- **Trustees** – responsible for three core governance functions – i.e. setting the direction, holding the headteacher to account and ensuring financial probity whilst complying with charity law.
- **Executive Board (Advisory)** made up of heads Chairs/Governors
- **Local Governing Bodies** – Trustees can delegate powers the LGB, this may vary school to school dependent on need but the Trustees make this decision as part of scheme of delegation.



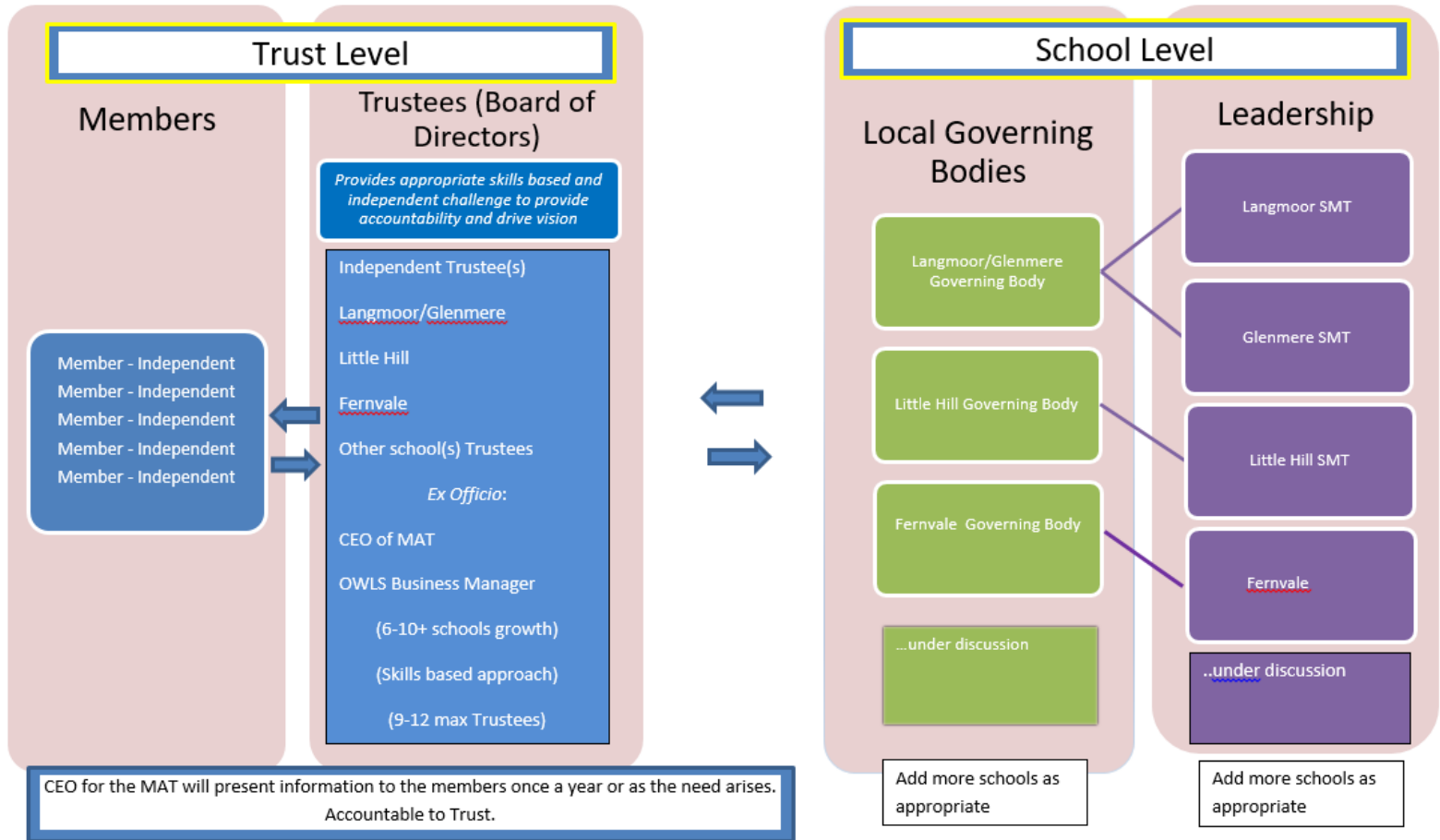
Hinckley Parks
Primary School

Governance - What doesn't change?

- SEN
- Safeguarding
- Admissions/Catchment
- RE and collective worship
- Free school meals
- Staff qualifications/pay
- Access to pension schemes
- Ofsted inspections
- Uniforms
- Policy on pupil discipline.

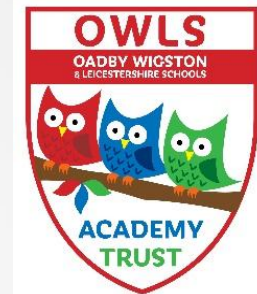


OWLS MAT Governance Structure (Future Vision, Feb 2017)



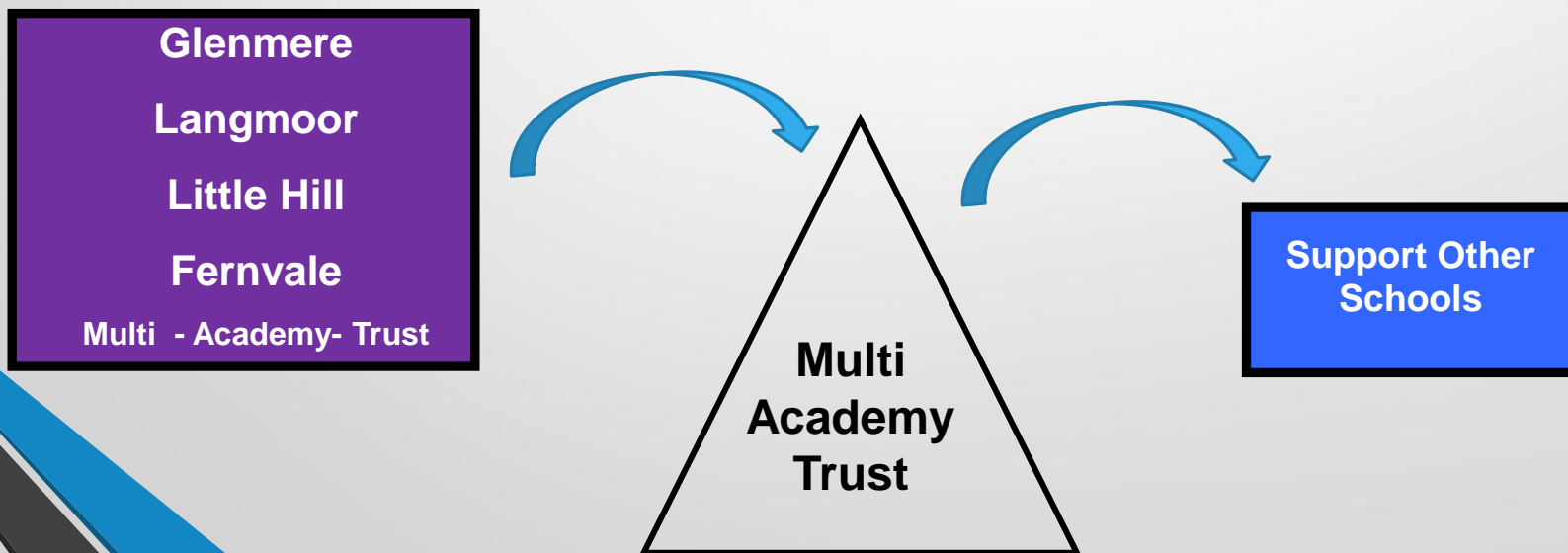


Hinckley Parks
Primary School



Our Model ...

- A number of separate schools / academies, each with their own identity, governing body and head teacher (i.e. just the same as now!)





What would this mean for our schools?

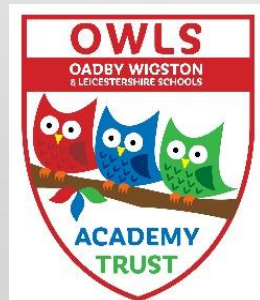
- Further development of excellent standards
- More Efficient Procurement
- Shared resources / facilities
- Engagement of parents throughout
- Engagement of pupils throughout
- Shared vision and ethos for pupils
- Shared arts delivery and resources
- Community cohesion
- Continuity and progression smoother
- Collaborative policy and practice
- Staff development
- Modelling of the curriculum to suit our needs



Our Proposal

For our schools to expand the *multi-academy trust* model

Fernvale Primary School to open as an academy
July/Sept 16





Hinckley Parks
Primary School



What challenges will we face?

- Academies must provide all services themselves
- Building in house expertise and ensuring that all systems are in place
- Maintaining good relationships with the Local Authority and with our other local schools
- Finance structures to be presented to the EFA – Education funding Agency.



Hinckley Parks
Primary School



Summary

- There will be minimal changes for pupils, parents and staff – we can only see the benefits!
- There are clear benefits to each school and challenges we as schools are ready to face!

The process

Timeline

When	Details
March 17	Hinckley Parks GB meeting - Proposal to move forward.
March 17	Staff to meet Peter Merry (CEO) to ask questions about OWLS.
March 17	Hinckley Parks Governors to meet with the OWLS CEO and Chair.
24 TH April 17	Academy Consultation begins.
April 17	Staff Consultation begins (TUPE).
24 th April 17	Parent meeting 6pm.
10 th May 16	Consultation ends.
22 ND May 17	Staff Consultation ends.
6 th June 17	Governors and OWLS to meet regarding consultations.
End of June	Decision will be finalised.



Your Questions

Thank you 😊



Hinckley Parks
Primary School